



FOR IMMEDIATE RELEASE | April 30, 2026

Contact Information: Steven Wagner, Marketing Manager

Entech Engineering, Inc. | 610.373.6667 | info@entecheng.com

Western PA Office Relocates to Beaver Falls

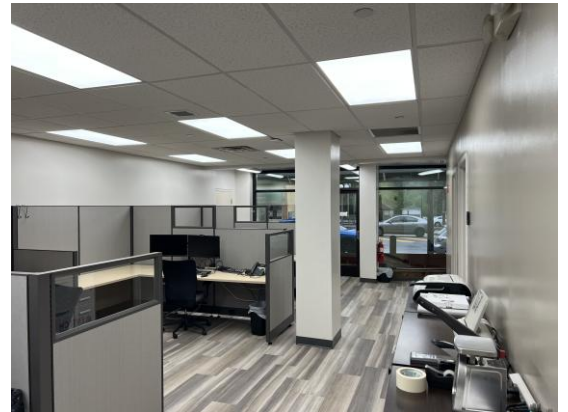
Reading, PA – Entech is pleased to announce the recent relocation of our Western Pennsylvania office to 1215 7th Avenue, Suite 101, Beaver Falls, PA 15010. All contact numbers remain the same, with the main phone number remaining: 412-264-2800.

The move was facilitated to provide a more accessible location for both Entech staff and clients throughout the Western Pennsylvania region, supporting continued growth and strengthening regional relationships. Entech has had a Western PA office in and around Pittsburgh, PA since 2013.



Robert Weir, PE, Entech President said of the move:

“The challenges presented by the pandemic have given us new insight into the types of spaces we need for the future of our work, bringing in-office and at-home team members together to collaborate and help our clients. We are committed to maintaining a strong presence in Western PA and look forward to continuing to grow our customer base throughout the region while transitioning to a space that better suits the needs of our staff and clients in the area.”



#